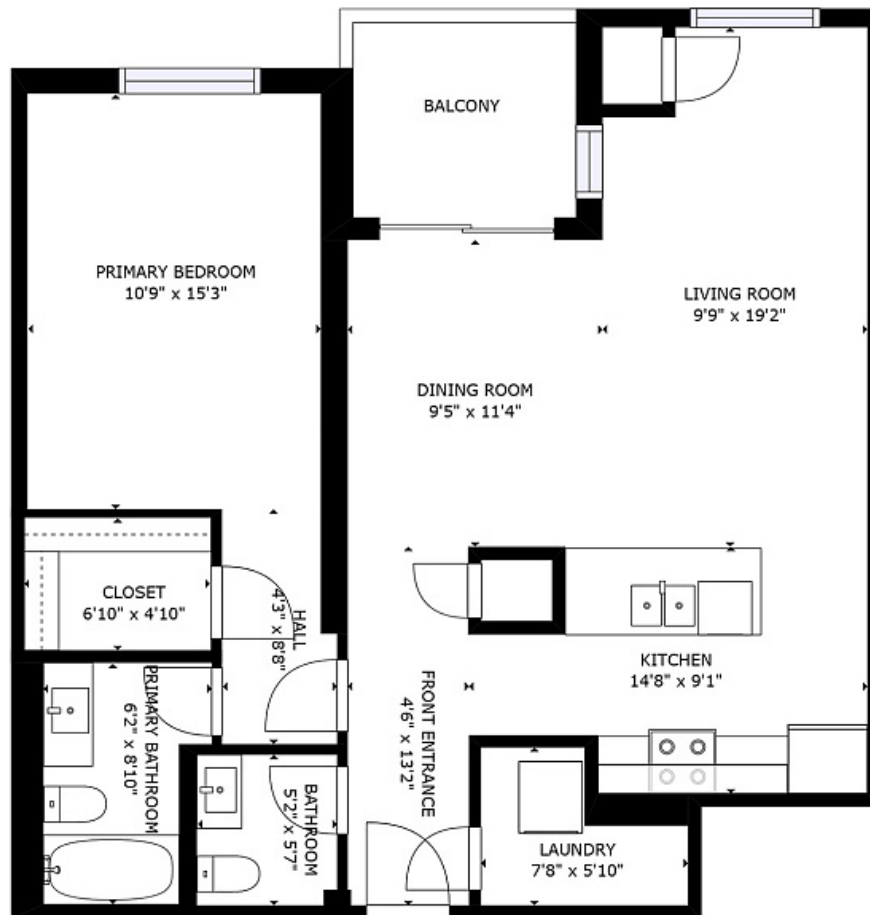


5070 FAIRVIEW STREET #101

BURLINGTON, ON L7L 0B8



APPROXIMATELY 920 SF, INCLUDING BALCONY

DIMENSIONS, AREAS, LAYOUTS AND DETAILS ARE APPROXIMATE
AND SHOULD BE CONSIDERED FOR ILLUSTRATIVE ONLY.